



YEAR 7 2016

Information Booklet

Evans High School

166 Walters Road, Blacktown NSW 2148
<http://www.evans-h.schools.nsw.edu.au>

T: 02 9621 3622

F: 02 9831 2747



The school is able to provide interpreters for parents or carers needing access to such a service. Please contact the principal should an interpreter be required for a meeting.

المدسة قادرة على توفير مترجمين للاهالي او مقدمي الرعاية الذين يحتاجون للوصول الى هكذا خدمة.
يرجى الإتصال بالرئيسة إذا دعت الحاجة لمترجمة للأجتماع.

学校可提供传译服务给有需要的家长 / 监护人。如任何会谈需要传译，请先联络校长。

學校可提供傳譯服務給有需要的家長/監護人。如任何會談需要傳譯，請先聯絡校長。

والدين و يا مراقبينى كه نیاز به مترجم دارند مدرسه می تواند برای انها مترجم فراهم كند. اگر نیاز به مترجم دارید لطفا با مدیر مدرسه تماس بگیرید.

학교는 그러한 서비스가 필요한 학부모와 보호자를 위하여 통역을 제공할 수 있습니다. 회의를 위하여 통역이 필요한 경우, 학교장에게 연락하시기 바랍니다.

Ang paaralan ay maaring magbigay ng tagapagsalin o interpreter sa mga magulang at tagapatnubay na nangangailangan ng tulong o serbisyo. Paki tawagan lamang ang punong-guro kung kailangan ang tagapagsalin o interpreter sa pakikipagpulong.

O se aoga e mafia ona feso'ota'i se Faiaoga tautala faasamoa pe a manaomia se fesoasoani e su'e se pokalame I nei le aoga. Faamolemole Vili le Pule o le Aoga, ae afai e mana'omia se tagata Faasamoa e mafia on feso'ota'i sesi e tautala ma oe.

பெற்றோர் அல்லது பராமரிப்பாளருக்கான கலந்துரையாடல்களின் போது மொழிபெயர்ப்பு சேவை தேவைப்படும் எனில் அச்சேவை பாடசாலை நிர்வாகத்தினால் வழங்கப்படும். இந்த சேவையினை பெற்றுக்கொள்ள பாடசாலை அதிபரை தொடர்பு கொள்ளவும்.

Sayın veli ve bakıcılar okuldaki servislerimize ulaşabilmeniz için okul tercüman sağlamaktadır. Toplantılarda veya okul ile ilişkiye geçmek istediğinizde tercümana ihtiyacınız olursa lütfen okul müdürü ile görüşünüz.

Table of Contents

Important Dates	4
Welcome	5
Staff	6
Year 7 Advisers	7
Evans High School Map	8
Attendance	9
Behaviour Expectations	10
Positive Behaviour for Learning	11
Bell Times	12
Uniform	13
Uniform Price List	14
Foot Requirements	15
Equipment List	16
Fee Contributions	17
Homework	18
Learning Assistance (Autism) Faculty	19
Communication	20
General Information	21
Curriculum	26
Subject Areas	27
Postcards from former Evans students	32

Important Dates

Important Dates for 2015

Thursday 3 December 2015

YEAR 7 ORIENTATION

Important Dates for 2016

*The Uniform Shop will be open from 9am to 2pm
on Thursday 21 January 2016*

TERM 1

Term 1 Begins **School Development Day**, Wednesday January 27, 2016
..... **Years 7, 11 and 12 begin**, Thursday January 28, 2016
..... **Years 8, 9 and 10 begin**, Friday January 29, 2016
Term 1 Ends Friday April 8, 2016

TERM 2

Term 2 Begins **School Development Day**, Tuesday April 26, 2016
..... **All students return**, Wednesday April 27, 2016
Public Holiday Queen's Birthday, Monday June 13, 2016
Term 2 Ends Friday July 1, 2016

TERM 3

Term 3 Begins **School Development Day**, Monday July 18, 2016
..... **All students return**, Tuesday July 19, 2016
Term 3 Ends Friday September 23, 2016

TERM 4

Term 4 Begins **All students return**, Monday October 10, 2016
..... **End term 4 for students**, Friday December 16, 2016
..... **School Development Day**, Monday December 19, 2016
Term 4 Ends **End term 4 for teachers**, Tuesday December 20, 2016

Welcome

Congratulations on enrolling in Evans High School for Year 7, 2016.

Evans High School is a comprehensive, co-educational secondary school. It offers a broad education to students from the local area as well as a significant number from other areas, many of whom travel quite long distances to avail themselves of the opportunities offered. An Intensive English Centre is located on site, catering for students who have recently arrived in Australia and who require intensive tuition in English.

Evans High School is home to a specialised unit catering to students with Autism Spectrum Disorder. They are part of the Learning Assistance Faculty and are taught in either a specialised home room environment, or as part of mainstream high school classes, depending on their needs. We also host the regional Return to School Centre, for students who have been suspended from their local school.

We offer a diverse range of educational experiences, both academic and extra-curricular. Significant events such as MADDfest (Music, Art, Dance and Drama) and Harmony Day are held in high regard by all members of the school community and contribute to student engagement.

The school is a PBL (Positive Behaviour for Learning) school encouraging our students to be Cooperative, Polite and Responsible citizens. The school has learning partnerships with many community organisations including local businesses and service providers. The school's website, Facebook and Twitter accounts are the major form of communication across the school community.

This information booklet has been developed in order to assist parents, carers and students entering high school. It contains information regarding school faculties, requirements and frequently asked questions.

Regards,



Bridget Sarris
Principal (Relieving)



Staff

Senior Executive

Mrs Bridget Sarris



Principal
(Relieving)

Mr Steven Fenech



Deputy Principal
7, 9, 11

Ms Belinda
Hunter



Deputy Principal
8, 10, 12

Mrs Linda
Cheeseman



Deputy Principal
IEC (Relieving)

Head Teachers

English/ESL/LOTE

Mathematics

Science

HSIE

Technology and Applied Studies

Creative and Performing Arts

PD/H/PE, Administration

Learning Assistance Faculty

Intensive English Centre (Relieving)

Return to School Centre

Mrs Ibaa Makhoul

Mr John Chung

Mrs Chitra Marasinghe

Mr Dave Merrick

Mr Tim Easterbrook

Mr Kyle Williams

Mrs Narelle Welch

Ms Rosemary Innes

Ms Fiona Halliwell

Ms Rose Williams

Year 7 Adviser

Welcome Year 7 Students

Hi,

My name is Rhiannon Brown and I will be the Year 7 Adviser for 2016. You can find me in the Mathematics staffroom or Room 5. My job as the year adviser is to make sure students are making the best use of their time at Evans High School, both academically and socially, and to act as the interface between home and school. Steve Satmaka will be assisting me as we work towards supporting the year group for the next 6 years.

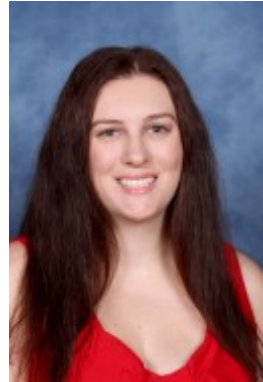
Transitioning from Year 6 to Year 7 is a whole new experience but it can sometimes be accompanied by lots of challenges. If you find that there are certain aspects of high school, that you are not coping with, please let me know as I want to make sure that things can be done to ensure the best possible outcome for each and every student.

My high school experience has helped shape my personality and make me who I am today. I look back to it with fond memories and feel lucky that I had teachers to help and guide me through that time. They helped me give my best by always being there and supporting me in my endeavours to achieve my goals. I wish to do the same for all my students and look upon this role as an opportunity to do so.

I know that the next few years will be full of exciting learning experiences and memories for you as well. I look forward to sharing them with you and wish you all the very best!

Ms Brown

Ms Rhiannon Brown



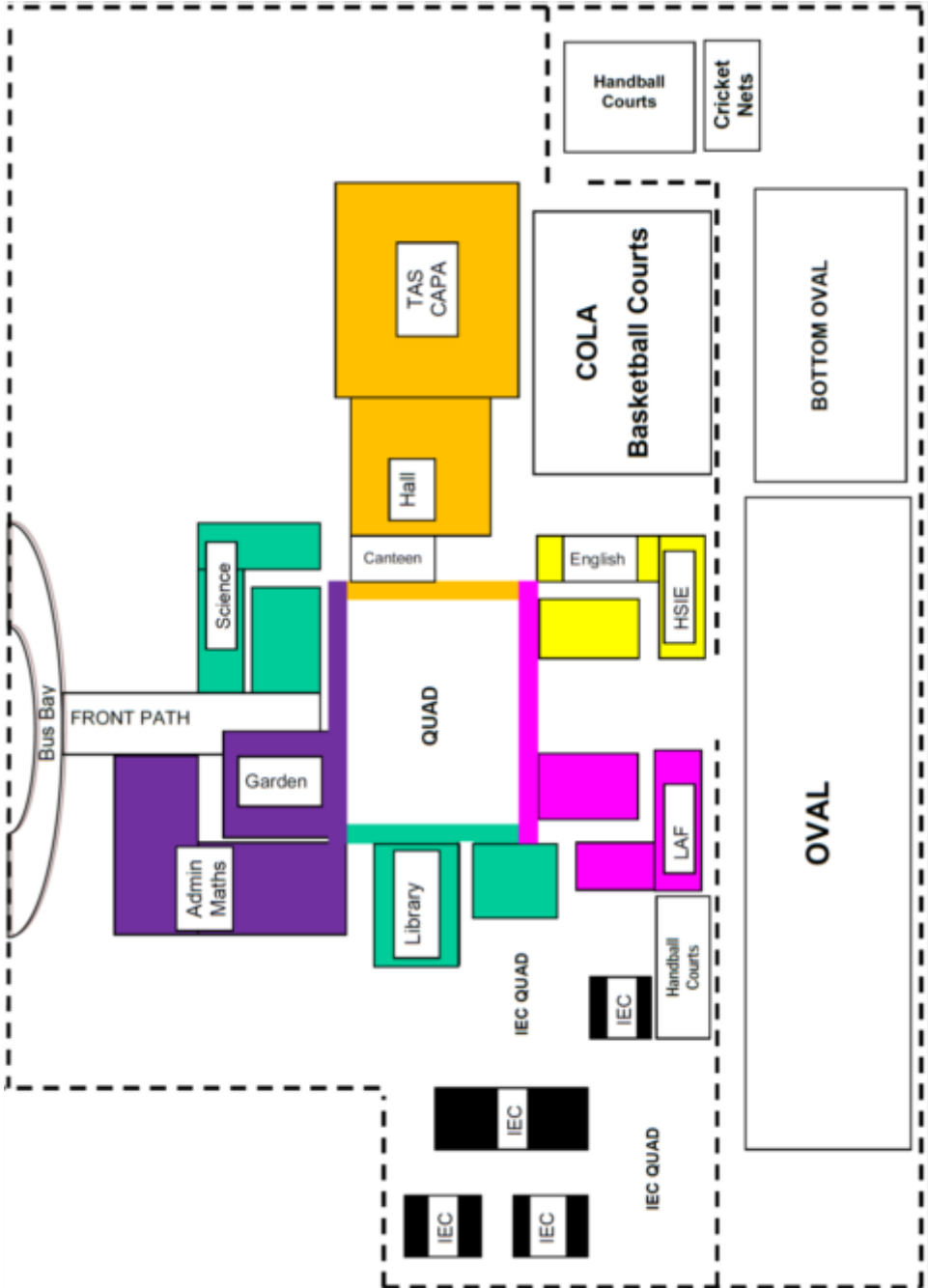
Mathematics Faculty
Rhiannon.brown10@det.nsw.edu.au

Mr Steve Satmaka



Learning Assistance Faculty
Stephen.satmaka@det.nsw.edu.au

Evans High School Map



Attendance

It is vital that students attend school every day. Students who are frequently absent have lower academic outcomes than peers with better attendance.

Roll Call

Roll call is at 8:35 each morning. On arrival, students must remain in the main quadrangle ready to move to roll call at 8.35am when the bell rings. Students go to their allocated roll call class for their attendance to be marked and receive school and Year group messages. Caregivers will be contacted if the school has concerns regarding a student's attendance.

Late to School

If students cannot report to roll call by 8:45am, they must report to the front office where their lateness is recorded. A note from home explaining the reason for being late and the time of arrival needs to be provided. Students may be required to make up the missed time during their own time.

Absent from School

A medical certificate and/or a note from home needs to be provided to the school when students return from absence. This note is to be handed to the students' roll call teacher during roll call.

Leaving School Early

Students need to provide a note to the front office in the morning to receive an Early Leaver's Pass. Please note that permission to leave school early will only be granted for specialist medical, dental or legal appointments or in the case of a family emergency. Ordinary medical appointments should be made for a time outside school hours.

Late to Class

Students are expected to arrive to all classes on time. Students must carry a note from the teacher who detained them if late. If students are not in the correct class, they may be considered a truant.

Please contact the school should you wish a copy of your child's attendance record.

Behaviour Expectations

At Evans High School we value the contribution of students, staff, carers and the wider community by working together. In doing so, we provide strong foundations for the education of our children and future generations. As members of the school community, we confirm these values by the way we communicate, work together and make decisions. These values guide student welfare, discipline and learning experiences, which enable all members of the school community to build positive relationships in a safe, supportive and caring learning environment.



CO-OPERATIVE

Working together by doing what has been asked and expected of me

RESPONSIBLE

Doing the right thing without being asked, because it is the right thing to do

POLITE

Showing respect for others in manners, speech and behaviour

Positive Behaviour for Learning

We believe that positive behaviour leads to improved student learning and achievement. We strive to maintain high standards of student behaviour with a focus on the expectation that our students are co-operative, polite and responsible learners.

Positive Behaviour for Learning is a system-based approach to enhance the capacity of schools, families and communities in dealing with problem behaviour. Attention is focused on creating and sustaining school-wide, group or individual systems that emphasise teaching expected behaviours to improve behaviour.



tolerant
polite
united
harmonious
cooperative
manners
collective
collaborative
helpful
kind
engaging
compassionate
understanding
courteous
respect

Bell Times

Our timetable is based on a fortnightly cycle. On the first day of school, students will receive their timetable that outlines their subjects and rooms. Please ensure that your child/ward keeps a copy of their timetable with them at all times and encourage them to pack their school bag the night before so they are prepared and organised for the following day.

Normal Day

ROLL CALL	8:35 – 8:45
Period 1	8:45 – 9:45
Period 2	9:45 – 10:45
RECESS	10:45 – 11:05
Period 3	11:05 – 12:05
Period 4	12:05 – 1:05
LUNCH	1:05 – 1:45
Period 5	1:45 – 2:45

Assembly Day

School assembly is held in the COLA every Tuesday prior to recess.

ROLL CALL	8:35 – 8:45
Period 1	8:45 – 9:35
Period 2	9:35 – 10:25
ASSEMBLY	10:25 – 10:45
RECESS	10:45 – 11:05
Period 3	11:05 – 12:05
Period 4	12:05 – 1:05
LUNCH	1:05 – 1:45
Period 5	1:45 – 2:45

Uniform

The school community has determined Evans High School uniform. Students at Evans High School are expected to wear full school uniform. It is also an important part of our School Fair Discipline Code, which was instituted after extensive consultation with students, carers, teachers and community groups.

- All students are equal
- There is no competition
- Conflict is reduced
- Safety is heightened and identification made simple
- Pride in our school is fostered

Students change into their sports uniform at school and are not permitted to wear it to and from school.

We thank carers in anticipation of their support for the school on this important issue.

The Uniform Shop will be open from
9am to 2pm on Thursday 21 January 2016

If for any reason students are unable to be present in appropriate uniform, they need to bring a signed note from a parent or carer detailing the issue and requesting consideration for a nominated period of time.

The uniform for students in Years 7 to 10 consists of:

- Black leather shoes
- Light green blouse, shirt or polo with school crest
- Bottle green shorts, trousers or track-pants
- Evans-design green tartan skirt
- Bottle green sloppy joe, cardigan, polar fleece, Evans microfibre jacket, Evans spray jacket or Evans blazer (no hoodies)
- All-white socks, plain black or skin-toned stockings
- Green or black school cap, green beanie, white or bottle green scarves, bottle green, black or metallic hair bands
- Simple jewellery
- Sport uniform is a bottle green 'soft style' sports polo shirt, bottle green sport shorts or track-pants and white or black sport shoes
- Any item worn beneath the uniform must be plain white if visible
- Please note that leggings are to be treated as underwear for school purposes

Uniform Price List

SHIRTS/BLOUSES		
Shirts	\$18.00	'Honeydew' shirt, blouse or polo with school crest. (White for Seniors) Long sleeved polos are available in some sizes or can be ordered.
Blouses	\$18.00	
Polos	\$18.00	
TROUSERS/SHORTS/SKIRT		
Trousers	\$35.00	Bottle green: tailored shorts; tailored slacks; microfibre track –pants, stretch pants or Evans-design tartan skirt. NOTE: plain green skirts or skorts or netball skirts are not uniform.
Boy Shorts	\$30.00	
Girls Shorts	\$20.00	
Skirt	\$35.00	
Microfibre Track Pants	\$22.00	
Girls stretch pants	\$20.00	
OTHER WARM CLOTHING		
Jumpers	\$16.00	Bottle green V-neck jumper ('Sloppy-Joe'); bottle green polar fleece; Evans microfibre jacket; Evans spray jacket or Evans blazer. (Microfibre jacket and microfibre pants = tracksuit.) Seniors may wear white jumpers. Hooded jumpers are not allowed. (Any item of clothing such as scarves, a t-shirt or skivvy worn <u>beneath</u> the uniform must be plain white if visible at all.) Girls bottle green cardigans will be available in the new year.
Polar Fleece	\$20.00	
Cardigan	\$22.00	
Microfibre jacket	\$35.00	
Whole Tracksuit	\$55.00	
Spray Jacket	\$35.00	
Blazer	\$75.00	
White T Shirt	\$ 5.00	Undershirt –may be worn beneath the uniform.
SPORTS UNIFORM		
(Students must wear usual uniform to school every day and change at school for Sport or PE lessons)		
'Soft feel' style sports polo	\$18.00	New 'breathable' design. Bottle green.
Shorts	\$18.00	Green unisex sports short.
Taslon track Pants	\$25.00	School taslon track pants with yellow flash (NOTE: These may only be worn for sport or P.E.)
OPTIONAL		
School Tie	\$17.00	Any students may purchase and wear the school tie.
School Caps	\$ 5.00	If a hat is worn it must be bottle green or black without decoration/logo.
School Beanie	\$ 5.00	Plain bottle green without decoration.
Hijab	\$10.00	White or bottle green.
OTHER INFORMATION		
Footwear		All-black shoes with leather upper. These must also satisfy Department of Education regulations. (Details on the following page).
Socks		Socks/stockings must be worn. Socks: all-white or all-black (i.e. no stripes/patterns) Stockings: plain & black or skin-toned. NO LEGGINGS.
Jewellery, Makeup		Simple jewellery i.e. watch, plain ring, sleeper earrings or plain studs, fine neck chain, single bracelet or bangle.
Headwear, scarves		Plain bottle green or black school cap or bottle green school beanie. White or bottle green scarves/hijabs (not striped etc). Hair band/slides etc should be bottle green, black or metallic. Bandanas are not permitted.

Shoe Requirements

The Department of Education states in the publication 'School Uniforms in NSW Government Schools (2004)', that under the Occupational Health and Safety Act 2000, schools must ensure that students are not exposed to health or safety risks while they are on Departmental premises. The school has a duty to require students to wear appropriate footwear to avoid injury.

The DET policy 'Chemical Safety in Schools (1999)' clearly states:

"It is mandatory that students carrying out practical activities using chemicals or equipment in schools wear enclosed leather footwear. Sandals, open footwear or high heeled shoes must not be worn in workshops or laboratories".

Acceptable Styles

The school expects students to wear black closed in leather, lace up style shoes. They must cover the top of the foot and have a non-slip sole.

Acceptable shoes includes the following types:



Unacceptable shoes:



Equipment List

Welcome students, parents and community members to what promises to be an exciting year of learning and educational growth for all our students.

Below is a list of requirements that the teachers have requested from each student.

Faculty	Subject	Requirements to purchase outside school	Requirements available at the school office	Cost
English	English	128 page A4 exercise book		
	LOTE	128 page A4 exercise book		
HSIE	History	128 page A4 exercise book		
	Geography	128 page A4 exercise book		
Mathematics	Mathematics	Minimum 128 page A4 5mm grid line exercise book	A Scientific Calculator (fx-82AU PLUS II)	\$20.00
Science	Science	128 page A4 exercise book		
Personal Development Health and Physical Education	PD/H/PE	128 page A4 exercise book Sports shoes	PE uniform	
Creative and Performing Arts	Music	96 page A4 exercise book (with manuscript included) Set of ear bud headphones		
	Visual Arts		120p Visual Arts Diary with school logo	\$6.00
Technical & Applied Studies	TAS	128p A4 exercise book A4 display folder Students MUST wear shoes with leather uppers		
Planning My Future	PMF	128 page A4 exercise book		

Stationery

A strong pencil case

Pens: blue; black and red

Pencils: HB; 2B and a set of coloured pencils

Sharpener

Eraser

Ruler

16

Glue Stick

Scissors

Permanent markers of any type and liquid paper are not permitted at school.

Fee Contributions

Subject Fee Contributions (may be subject to change)

The financial contributions cover costs of materials used by your child in subjects that go beyond the minimum requirements of the curriculum.

The NSW Government provides Evans High School with funds annually under the Study Assistance Scheme to assist eligible families with school-related expenses. Financial assistance is available for school essentials such as uniforms and

General Contribution

General Contribution	\$50.00	At the start of the each year we ask for a voluntary school contribution to enhance our educational and sporting programs
----------------------	---------	---

Year 7 Fee Contributions

SUBJECT	COST	Provides consumables including (but not limited to):
Mathematics	\$24.00	subscription to an online interactive mathematics portal for use at home and school, exercise books, stationery
Music	\$20.00	guitar strings, adaptors, individual student workbooks, stationery
Technology	\$50.00	food ingredients, wood, metals, plastics, fabrics, cleaning materials, utensils, tools, staining, brushes, paint, personal protective equipment
Visual Arts	\$26.00	paint, brushes, drawing equipment, art paper, printing, sculpture materials, individual student workbooks

Support Unit Fee Contributions

SUBJECT	COST	Provides consumables including (but not limited to):
Learning Assistance Fee	\$30.00	general classroom equipment, exercise and work books and stationery
Support Unit Design & Technology	\$50.00	food ingredients, wood, metals, plastics, fabrics, cleaning materials, utensils, tools, staining, brushes, paint, personal protective equipment
Support Unit Visual Arts	\$28.00	paint, brushes, drawing equipment, art paper, printing, sculpture materials, individual student workbooks

Homework

Why Homework?

As a community of students, carers and teachers, we believe that homework is important because it:

- consolidates and extends work covered in class time;
- fosters self-discipline and performance through the development of independent study habits;
- provides a link between the school and home. It enables carers to be partners in the education of their child and offers carers an opportunity to monitor their progress.

How Much Homework?

Homework is defined as any task assigned by school teachers intended for students to carry out during non-school hours designed to meet specific learning goals.

The amount of homework expected increases as a student progresses through school.

- It is the policy of the school that all students should do some regular work at home to follow up the work done in class each day.
- It is important that carers supervise completion of homework and, where possible, assist. This will allow carers to monitor the progress of their child.
- Providing a suitable location within the home is important if homework is to be of the greatest value.
- Set homework is to be written in a diary to assist students to organise their time.

Learning Assistance (Autism) Faculty

The role of the Learning Assistance (Autism) Faculty is to facilitate the successful integration of students with Autism Spectrum Disorder into the comprehensive high school by equipping them with skills which enable them to navigate their daily school life, access the curriculum in a least restrictive environment and prepare them for post school life.

Our approach is based upon informative and critical assessment of current research and data, which is delivered in a flexible, non-judgemental environment. Our teaching and learning programs incorporate the Quality Teaching Framework and 'Best Practice' strategies with Autism.

The Learning Assistance Faculty has a current model of three homeroom classes with a total of 21 students. Each student is enrolled in a homeroom class. The level of support from us will vary according to the student's individual needs. Some students are on a mainstream pattern of study and are taught by high school teachers for all subjects with support from the Learning Assistance Faculty.

Some students are taught from the homeroom setting, as they require minimal movement during the school day. Students are taught by the same classroom teacher to minimise change and are taught by specialist teachers for food technology, visual arts and woodwork.



Communication

Website

The Evans High School website provides useful information about the running of the school including calendar dates, photos and videos of school events, access to notes and newsletters, latest news and features, and information about faculties and curriculum.

The website address is: www.evans-h.schools.nsw.edu.au

Social Media

Evans High School recognises the importance of communication to build a strong and supportive school community. Through our official school presences on Facebook, Twitter and YouTube, we share the many positive events going on around our school. We promote upcoming events, share successes, and showcase photos and videos from the many exciting things that happen here at Evans. We welcome all students and carers to connect with us through our social media sites, however encourage you to participate appropriately, and to protect yourselves online.



www.facebook.com/EvansHighSchool



www.twitter.com/EvansHighSchool



www.youtube.com/EvansHighSchool1

Front Office

The front office hours are from 8.00am—2.45pm. Any payments that need to be made to the school are accepted from 8.00am—8.25am and recess time (10.45am—11.05am).

It is important to ensure that the school has your current contact details. Please notify the front office should your details need updating.

General Information

Canteen

The school canteen operates every school day. It provides a nutritious variety of wholesome foods, both hot and cold. To avoid disappointment, students are encouraged to order their lunch before school or at recess.

Interpreters

The school is able to provide interpreters for parents or carers needing access to such a service. Please contact the principal should an interpreter be required for any meeting.

Mobile Phones and Other Electronic Devices

Students who bring mobile phones and other electronic devices with them to school are responsible for them.

**Phones must be switched off and out of sight
in students' bags or pockets during class time,
unless the teacher asks students to use it
for a particular educational purpose.**

Students are allowed to access phones during recess and lunch time.

Parents or carers are asked not to ring or message students on their mobile phones during the school day. Please call the front office. If students need to contact parents/carers during the school day they are to get the permission of a teacher, head teacher or deputy principal and go to the front office.

Any message is to go through the school's front office and it will be given to your child. Students who bring mobile phones to school do so at their own risk. The school will accept no responsibility for any loss or damage to mobile phones.

Students who use a mobile phone or other electronic devices to record potential criminal activity need to be aware it will be confiscated and given to the police.

General Information

Parents and Citizens (P&C Association)

The Parents and Citizens of Evans High School meet on the last Tuesday of each month at 11am in the staff common room.

They discuss and receive information regarding the issues that affect their children. They raise issues or make suggestions that help make Evans High School a better place for the students. They receive a behind the scenes view of the running of the school that help them understand how and why things are the way they are; this way they can contribute in a positive way.

The P&C have the full support of the teachers and the principal as they are an extremely important part of the school community.

We warmly welcome you to be part of your child's future and the planning of future events, functions and information sessions.

Reports and Examinations

Students are issued with two reports annually. These reports outline each student's achievements and progress.

School Counsellor

School counsellors are experienced teachers who are also psychologists. They assist teachers by strengthening the school's welfare provisions and provide counselling and psychological assessment of students with specific needs. Their work with classroom teachers is designed to improve student learning outcomes.

All students can access the school counsellors. They provide assistance to students experiencing emotional, psychological, social and learning problems. In supporting students, school counsellors will also provide advice to carers and teachers as appropriate. If carers

wish to speak to the counsellor, please phone the school to make an appointment.

General Information

School Development Days

School development days give teachers, carers and the whole school community the opportunity to participate in a range of activities aimed at the overall development of the school. They are held on the first day of Term 1, 2 and 3, and the last two days of Term 4. Classes are not held on these days and students are not expected to attend school.

Sick Students

If students are sick it is recommended that carers keep them home from school. If students become sick during the school day, the office staff will attempt to contact home, requesting permission to send the student home. For this reason, we ask carers to update their contact details when they change.

Carers of students who require regular medication should ensure that the school is aware of the child's condition. If students are required to bring medications to school they should:

- have a document from their doctor indicating type of medication and dose;
- bring their medication to school in a prescription bottle.

Some students require a Health Care Plan to manage their medical condition. Please make sure that the year adviser is aware of any medical conditions your child may have, so a plan is developed.

Special Religious Education (Scripture)

Special Religious Education involves authorised representatives of approved religious persuasions providing instruction to students of that persuasion within school time. Carers nominate their child's religious persuasion at enrolment and may withdraw from or change Special Religious Education classes by notifying the front office.

General Information

Sport

Sport is a valued and accepted part of the school curriculum because it contributes to the development of the whole student. It also provides opportunities for students to gain confidence and to develop a variety of skills for participation in lifelong recreation. Sport is compulsory for students from kindergarten to Year 11 and is at the principal's discretion for Year 12 students. Year 7 sport is every Friday periods 3 and 4.



Student Achievements

The staff of Evans High School believe it is important that individual achievement is rewarded and acknowledged. The merit system is used to encourage all students to achieve their best.

Evans High School has a number of methods for recognising student achievement. These include:

- Class Merit Awards: awarded by class teachers
- Bronze Awards, Silver Awards and Gold Awards
- Principal's Award: awarded at the principal's discretion

General Information

Technology

Evans High School recognises that 21st Century learners' needs revolve around integration of technology in all syllabus areas. The ability to access, analyse and evaluate information will be increasingly vital for full participation as an active citizen of the future. Evans High School has computer laboratories, four Interactive Video Conferencing Suites and 13 classrooms with interactive SMART Boards all connected to the internet.

Travel Passes

Applications for train and bus passes are available from the school. The Department of Transport manages the Student Transport Scheme. If you require further information, please call the info-line on 131500 or go to www.131500.info

Application forms are also available from the front office.

Welfare Programs

Evans High School has student welfare as a priority. It is important that each student feels safe and supported at school. Effective schooling needs to be based on strong partnerships between carers, students and staff. Carers and students should be well informed and support procedures so that they can raise issues and be part of developing solutions.

Should a student have issues adapting to teacher expectations, we attempt to work through the situation via an interview, where the student engages in conversations with the teacher called, 'Let's work it out'. Teachers will support students and remind them of the expectations, i.e. rule reminders, expectation referrals, directive statements, interviews at recess and lunch. Students are expected to attend interviews and work out the problem with individual teachers. If they continue with inappropriate behaviour, the Department of Education and Communities suspension procedures will be followed.

We expect students to be co-operative, polite and responsible at all times. Teachers will be in contact via phone or letter.

Curriculum

Key Learning Areas

The NSW school curriculum is organised into key areas of learning as required by the Education Reform Act 1990. There are eight secondary school Key Learning Areas. These are English, Mathematics, Science, Human Society and Its Environment, Languages, Technological and Applied Sciences, Creative Arts, and Personal Development, Health and Physical Education (PD/H/PE).

Evans High School has organised its timetable into five periods of one hour.

The timetable covers two weeks i.e. Week A and Week B.

Below is a summary of the number of periods each subject has per fortnight in Year 7.

SUBJECT	NUMBER OF LESSONS
English	6
Mathematics	6
Science	6
Human Society and Its Environment (HSIE)	5
PD/H/PE	4
Technology	5
Visual Arts	3
Music	3
Sport	4
Languages other than English (LOTE)	5
Planning my Future	3

Subject Areas

English

At Evans High School, we offer a wide range of experiences within our English classes, to provide opportunities for all students to develop their literacy skills and become competent confident users of the English language. The study of English in junior years aims to develop students' knowledge, understanding, appreciation and enjoyment of the English language and develop their skills as effective communicators.

Students develop their control of language by reading and viewing a range of texts and by writing imaginative, interpretive and critical texts with clarity and accuracy for a range of purposes and audiences. Students engage with and explore literature of past and contemporary societies, as well as a range of spoken, visual, media and multimedia texts.



Mathematics

At Evans High School students explore a range of mathematical concepts to develop their numeracy skills and become confident mathematicians.

Mathematics courses aim to create confidence and enjoyment in doing mathematical activities. Students develop an awareness of how mathematics can be used to solve problems in everyday life. They also learn of its contribution to the development of society.

In Years 7 and 8, all students explore a broad range of topics including number skills, probability, data, financial mathematics, area and volume, algebra, Pythagoras, percentages, rates and ratio, space and geometry.

For students in Year 8 the use of a scientific calculator is mandatory. It is important, however, that students maintain and develop their mental arithmetic skills, rather than relying on their calculators for every calculation.

Subject Areas

Science

In Science, students are given opportunities to develop their skills in working scientifically through planning and carrying out experiments, developing scientific thinking and problem solving techniques and working individually and in teams.

In Years 7 and 8, students are introduced to the different branches of science (Chemistry, Physics, Biology, Geology and Astronomy) and lay the foundations for further studies in these areas.

Topics covered in Year 7 include Working Scientifically, Separating Mixtures, The Particle Model of Matter, Living Things and their Cells, Forces and Energy, and Our Earth and Beyond.



Human Society and Its Environment (HSIE)

The Human Society and Its Environment (HSIE) Faculty covers a wide range of social science and history subjects across the junior and senior school.

In the junior years we offer History and Geography.

The focus in Geography for Years 7 and 8 is on global geography. Detailed mapping skills are further developed using different types of maps, plus physical, political, topographic and calculation material using maps, graphs and statistics. Fieldwork is undertaken using measuring instruments.

In Years 7 and 8, History has been designed to provide students with an understanding of world history from ancient times to the modern world and the basic skills required for the effective study of History.

Four topics are covered, each with internal options. The topics include Investigating History, Societies and Civilisations of the Past, Aboriginal and Indigenous Peoples, Colonisation and Contact History and (Optional Study) Shaping the Modern World.

Subject Areas

Personal Development, Health and Physical Education (PD/H/PE)

At Evans High School, PD/H/PE offers a variety of subjects and opportunities around the areas of health, physical development, and sports.

We aim to educate and develop in each student, knowledge and skills they will need for everyday life. Particular focus is on providing students with opportunities which allow them to think critically about key issues related to health and physical activity, in order to make informed decisions that support and contribute to healthy, active lifestyles and communities.



Subjects covered in Years 7 and 8 include physical education, nutrition, road safety, drug and drug abuse, mental health, disease, developing and maintaining healthy relationships, contraception, first aid, sexuality and puberty, discrimination and anti-discrimination laws.

Design and Technology

Year 7 students at Evans High School learn about basic skills in a range of technology areas, such as timber, food, textiles, polymers and more. These skills will be beneficial for designing a variety of projects in the above technology areas.

Visual Arts

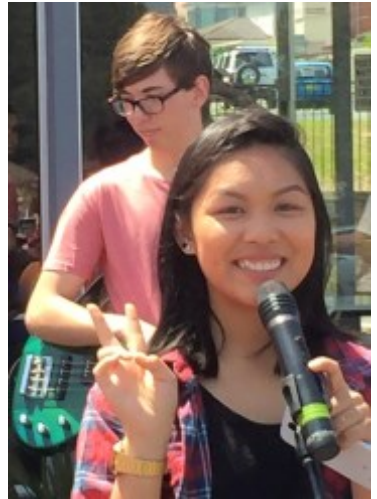
Visual Arts in the junior school is dedicated to developing students' basic creative skills set. Through engaging and creative artmaking activities, students learn how to produce an artwork that is of high quality. Students engage in a variety of classroom activities like drawing, watercolour painting, lino-printing and a variety of 3D forms like ceramics and sculpture. Visual Arts also incorporates historical and critical studies where students learn about specific artists and artworks from the world today and the past.

Subject Areas

Music

Music students in Years 7 and 8 begin to learn about the concepts of music and cover a variety of topics such as instruments of the orchestra, music notation and rhythm, keyboard and guitar work, exploration of instruments in a rock band and various ensemble work. Students work with percussion instruments during rhythmic activities and also touch on Western instruments such as guitars and keyboards, before further enhancing their practical and aural skills in Year 8.

The Creative and Performing Arts (CAPA) Faculty provides many extra-curricular activities for all students to be involved in. These include MADD Fest, Dance ensembles (Junior Dance, Senior Dance, 'Bring It On' Ensemble), Music Ensembles (Vocal Ensemble, Rock Bands, Percussion Ensemble), Education Week and Harmony Day performances, Eisteddfods such as 'Curtain Call' and 'Dynamic Dance Festival', photography competitions and Presentation Night and Merit Assembly performances.



Sport

All students in Years 7 and 8 participate in Sport every Friday during periods three and four. Each term, students are given the opportunity to choose the sport they would like to participate in. The current sports that may be chosen include Basketball, Soccer, Touch Football, Table Tennis, Gym, E-games and Volleyball. Students may also choose to participate in Dance instead of one of the previously named sports.

Junior Sport provides all students with the opportunity to try a new sport or take part in a sport they already enjoy. Sport also provides Years 7 and 8 students with the opportunity to interact with each other and make friends with students in other Year groups. Student participation in Junior Sport often leads to students trying out for and being selected to represent our school in State Knockout Competitions.

Subject Areas

Language Other Than English (LOTE) - French

The study of languages provides opportunities for students to become more accepting of diversity, more respectful of others and more aware of their place in the international community.

Contemporary research and practice have established a clear link between the learning of languages and improved literacy skills for both background speakers and second language learners. Even limited experience of the learning of languages is shown to increase metalinguistic awareness and enhance general cognitive development.

French is one of the major languages in the world. It is used in parts of Europe, Canada, North America, Africa, the Middle East, the West Indies, the Indian Ocean region and the South Pacific region close to Australia, namely New Caledonia, Tahiti and Vanuatu.

French has been, by tradition, the language of diplomacy. It is an official language in a large number of international organisations including the United Nations Organisation, the European Union, the South Pacific Commission, the Organisation for African Unity and the Olympic Games. It boasts a strong presence in international conferences.

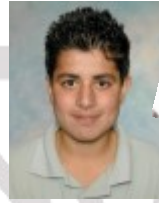
As part of the mandatory 100 hours, students are exposed to and learn the vocabulary, the grammatical structures and the cultural aspects of the following topics – introductions and meeting people, numbers, telling time, food and French cuisine, education, family, accommodation, asking for directions, Easter and Christmas.

Planning My Future

In Planning My Future, students work on developing positive attitudes towards their studies, social skills and acceptance of different cultures. Students engage in topics including school expectations, multiculturalism, Harmony Day, bullying and cyber bullying, study skills needed for high school, drug education with a focus on tobacco, NAIDOC week celebration, resilience, education around the world, 'R U OK?' Day and mental health, positive relationships, making a difference in the community and keeping safe during the holiday period. Students engage and learn these topics through a wide variety of learning situations including guest speaker seminars.



Ahmad Dadow
*Bachelor of Criminology/
 Bachelor of Law*
 UWS



Shahzeen Ali
Bachelor of Commerce
Macquarie Univer-
sity



Robert
Sobaljeswski
Diploma of
Information
Communication
Technology UWS



Shivane
Bishwa
Bechelor of Business and
Commerce UWS

Raju Rijal
Bachelor of Biomed-
ical Science
University of Technol-
ogy Sydney

Stuart McMahon
Bachelor of Arts (Teaching)
 UWS



2014
ALUMNI

Ayesha Chandra
Bachelor of Liberal Arts and Science
 Sydney University

